

## ■ Tray Support

If the tray becomes a bit loose, or if you need to change the angle of the legs, you can do so with the tray support. Loosen the adjustment bolt shown in Fig. 5, move the tray support in the appropriate direction as shown by the arrows, and then retighten the bolt.

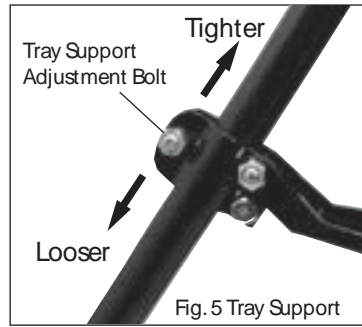


Fig. 5 Tray Support

## ■ Ceiling Brace

If you use the bending grooves, etc., and the vice starts to lift up, you can stabilise and fix it in place by placing a pipe of sufficient length between the ceiling brace and a firm roof beam.

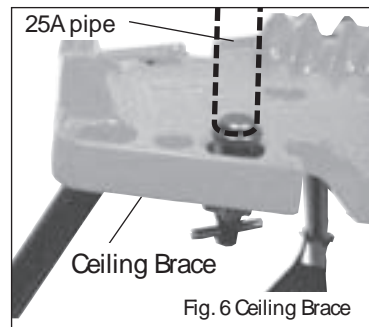


Fig. 6 Ceiling Brace

### ⚠ WARNING

- Ensure the adjustment bolt is firmly fixed in position. If it is too loose, the vice could become unstable, which could lead to injury or an accident.

### ⚠ WARNING

- Before use, ensure that the pipe is firmly in place. If the pipe comes loose while using the vice, the vice may overturn, which could lead to injury or an accident. Make sure you use a place where you can fix the pipe in position securely without it slipping.

## ■ For Safe Operation

### ⚠ WARNING

#### ① Use only in a stable location

- Make sure the feet are in a stable position which allows the vice to keep its balance.
- If it overturns, it could result in an injury.

#### ② Check for damage

- Before use, make sure there is no damage to any of the working parts and that the vice can fully operate in a normal way and perform all its prescribed functions correctly.

#### ③ Be careful not to get your fingers, etc. caught when setting up the tool tray

- When setting up the tool tray, folding up the stand to carry it, or when putting it away for storage, be careful not to get your fingers caught in the tray.

#### ④ Make sure you use the leg chain to fix the legs in position when carrying the Stand

- Never forget to use the leg chain!
- Using excessive force on the leg chain could break the links resulting in injury or an accident.

#### ⑤ Ensure the workpiece is securely fixed in position before starting work

- If the chain is loose, the pipe could fall off, which could lead to a very dangerous situation.

#### ⑥ Be careful the stand will not fall over.

- Should it be necessary to apply considerable force to the vice stand, be sure to remove the rubber grommets and fix the stand in position with an anchor or similar.
- If the stand falls over it could lead to injury or an accident.

#### ⑦ Store carefully when not in use

- Store in a dry, locked room, out of the reach of children.

#### ⑧ Always ask a specialist to carry out any repairs or an overhaul

- REX products are designed to comply with high standards of safety. Never try to dismantle or repair them yourself.
- For any repairs, always contact the place where you purchased the product, or your nearest REX sales office.

## REX INDUSTRIES CO., LTD.

Overseas Sales Dept. & Factory :  
1-9-3, Hishiya-higashi, Higashi-Osaka 578-0948, Japan  
Tel.:+81- (0) 72-961-9820 Fax.:+81- (0) 72-961-9878  
URL [www.rexind.co.jp](http://www.rexind.co.jp)

CVX6-English  
5V430-E4  
1001R0000

# REX

## Pipe Tools

# Chain Vice Stand CVX6

### CVX6

### OPERATION MANUAL



- Be sure to hand this operation manual to the user.
- To ensure safe and efficient use, read the manual thoroughly before using the stand.
- Be sure to keep the manual where the operator can refer to it whenever necessary.

## ■ Names of Parts, Standard Specifications, Standard Accessories

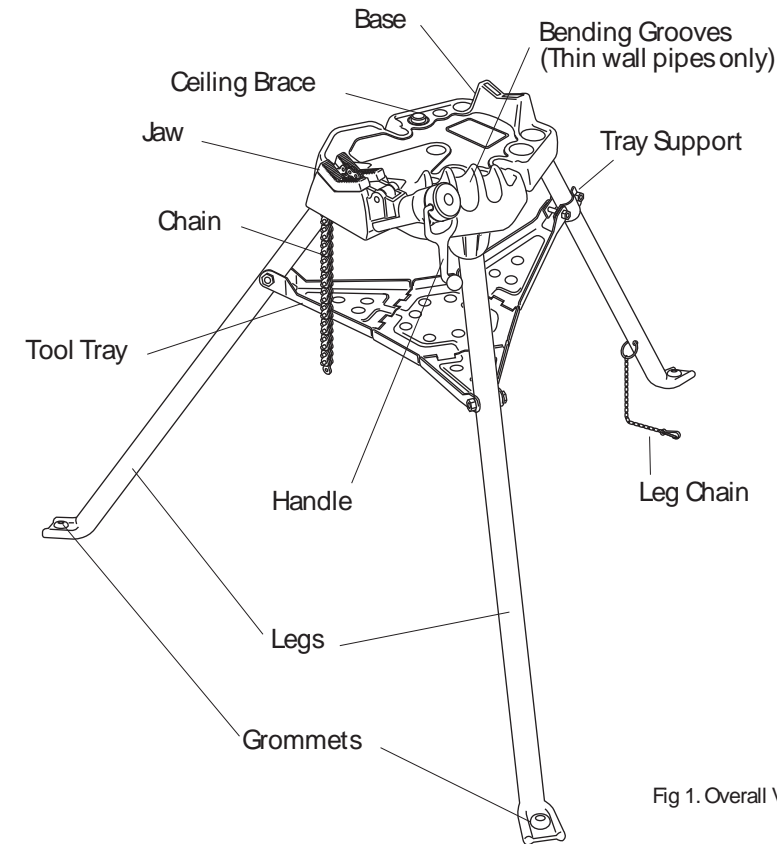


Fig. 1. Overall View

Model	CVX6
Name	Chain Vice Stand
Applicable Pipe Diam.	1/8 - 6" (8A - 150A)
Applicable Pipes	Steel pipe
Size (mm) (L×W×H)	1198 x 1134 x 960
	For Asia 1198 x 1134 x 890
Weight (kg)	19.6
Additional features	Bending Grooves (Thin wall pipes only) Pipe Support Tool tray

Table 1. Standard specifications and attachments.

## ■ Setting up

When you set up the stand, open the legs and push the tool tray down until it locks into position.

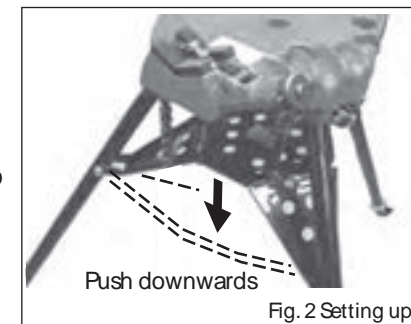


Fig. 2 Setting up

## ■ Carrying the stand

Whenever you carry the stand, fix the legs in position with the leg chain so that the legs don't suddenly open up.

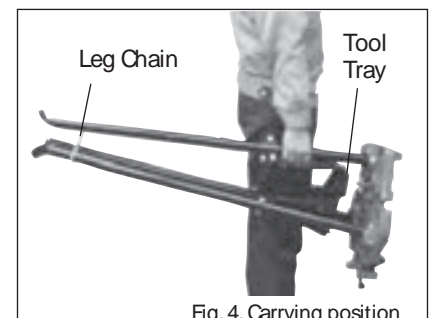


Fig. 4. Carrying position

## ■ Storage

When you have finished using the stand, turn it upside down and push down on the tray to return it to its closed position.

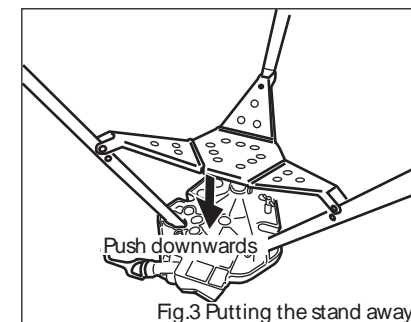


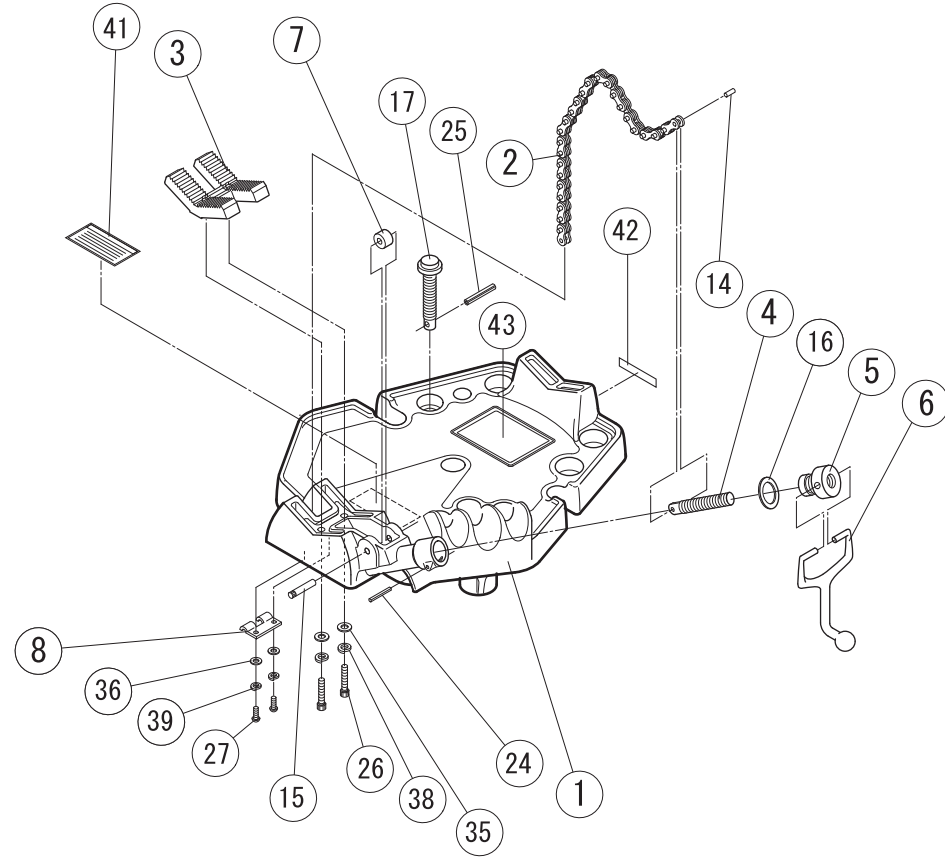
Fig. 3 Putting the stand away

### ⚠ WARNING

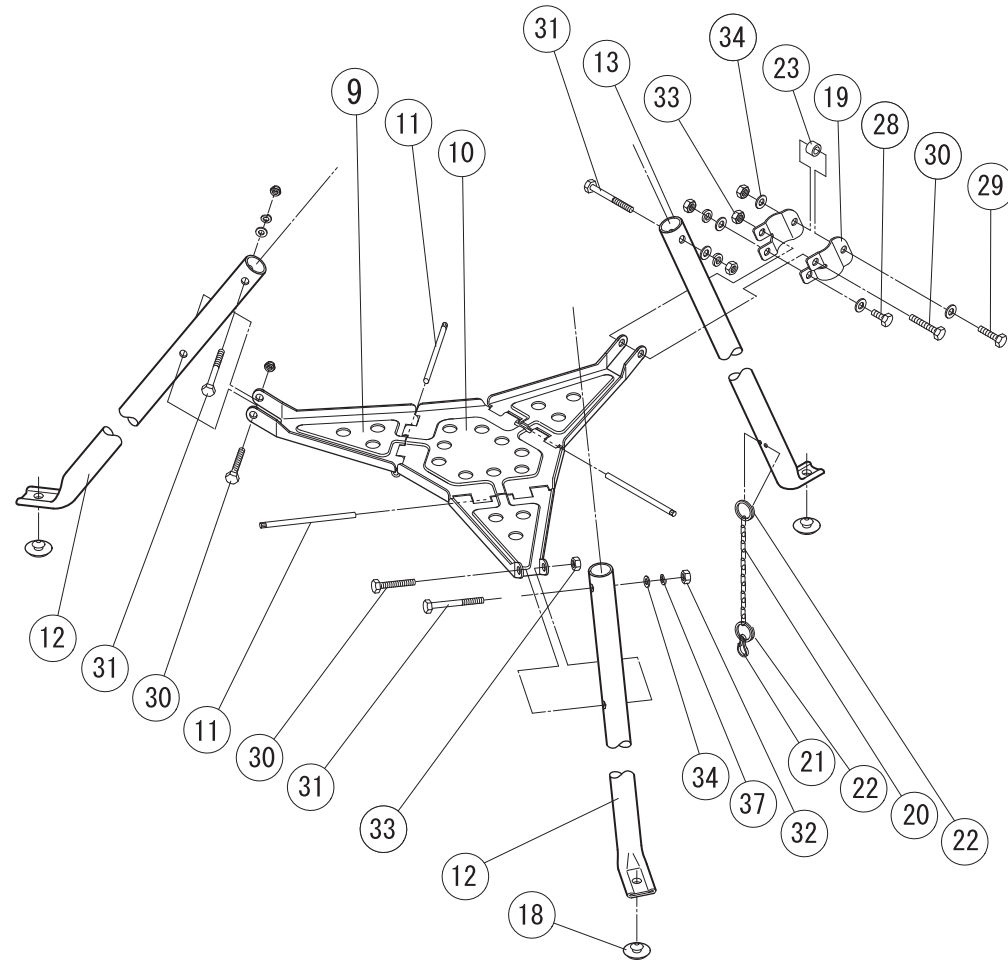
- Be careful not to pinch your fingers when pushing down the tool tray as you set up. Also, keep your face away from the tray in case it suddenly snaps back.
- Be careful not to apply too much force when you put the stand away or the legs may suddenly close up and you could possibly injure yourself or hit yourself in the face.
- Do not use excessive force on the leg chain or else it could break. Walk evenly when carrying the stand

# CVX6

## 1. Base



## 2. Legs



No.	REX No.	Part Name	Q'ty	
1	VS40	Base	1	
2	VS02	Chain	1	
3	VS03	Jaw	1	
4	VS04	Chain Screw	1	
5	VS05	Swivel Nut	1	
6	VS06	Handle	1	
7	VS07	Roller	1	
8	VS08	Wear Plate	1	
9	VS09	Tool Tray (A)	3	
10	VS10	Tool Tray (S)	1	
11	VS11	Tray Pin	3	
12	VS12	Leg (A) Long	2	Short : VS41
13	VS13	Leg (B) Long	1	Short : VS42
14	VS14	Chain Pin	1	
15	VS15	Roller Pin	1	
16	VS19	Friction Ring	1	
17	VS25	Ceiling Brace	1	
18	VS27	Grommet	3	
19	VS28	Tray Support	1	
20	VS29	Leg Chain	1	
21	VS30	Leg Chain Snap	1	
22	VS31	Leg Chain Ring	2	
23	VS16	Tray Support collar	1	
24	WM53	Pin	(5×35)	1
25	WL89	Roll Pin	(8×55)	1
26	W084	Socket head cap screw	(M8×40)	2
27	W04F	Socket button head cap screw	(M6×15)	2
28	W100	Hexagon head cap screw	(M10×20)	1
29	W101	Hexagon head cap screw	(M10×30)	1
30	W105	Hexagon head cap screw	(M10×50)	3
31	W103	Hexagon head cap screw	(M10×80)	3
32	WC10	Nut	(M10)	5
33	WE11	Lock nut	(M10)	3
34	W105	Washer	(M10)	7
35	W181	Washer	(M8)	2
36	W162	Washer	(M6)	2
37	WG10	Spring washer	(M10)	4
38	WG08	Spring washer	(M8)	2
39	WG06	Spring washer	(M6)	2
40				
41	9A62	Warning label		1
42	9A63	Label		1
43	VS51	Name plate		1
44				
45				
46				
47				
48				
49				
50				
51				
52				
53				
54				
55				
56				
57				
58				
59				
60				
61				
62				
63				
64				